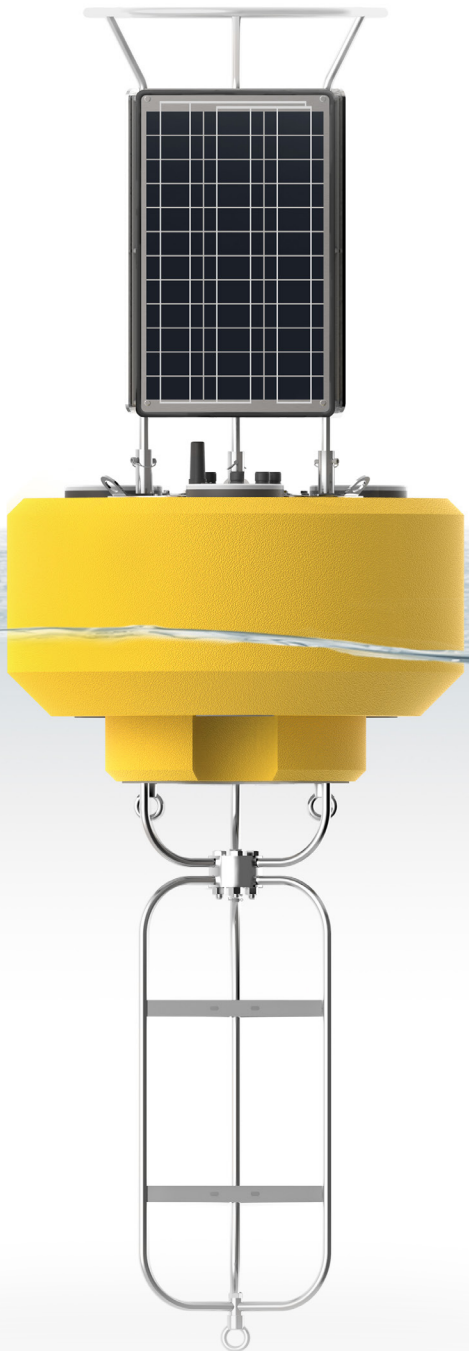


CB-950

DATA BUOY

- Self-powered data logging buoy
- Cellular or Iridium satellite telemetry
- Supports a variety of environmental sensors
- Accommodates most environmental data loggers
- Rugged polymer-coated foam hull



The NexSens **CB-950** Data Buoy is designed for deployment in lakes, rivers, coastal waters, harbors, estuaries and other freshwater or marine environments. The floating platform supports both topside and subsurface environmental monitoring sensors including weather stations, wave sensors, thermistor strings, multi-parameter sondes, Doppler current profilers and other monitoring instruments.

The buoy is constructed of an inner core of cross-linked polyethylene foam with a tough polyurea skin. A topside 41" tall stainless steel tower includes three 46-watt 12VDC semi-flexible solar panels, and a center 10" ID x 25.5" tall data well accommodates batteries, data loggers, sensors, and more. Three 6" pass-through holes with female NPT bottom threads allow for quick connection of instrument deployment pipes and custom sensor mounts. The stainless steel frame supports both single point and multi-point moorings.

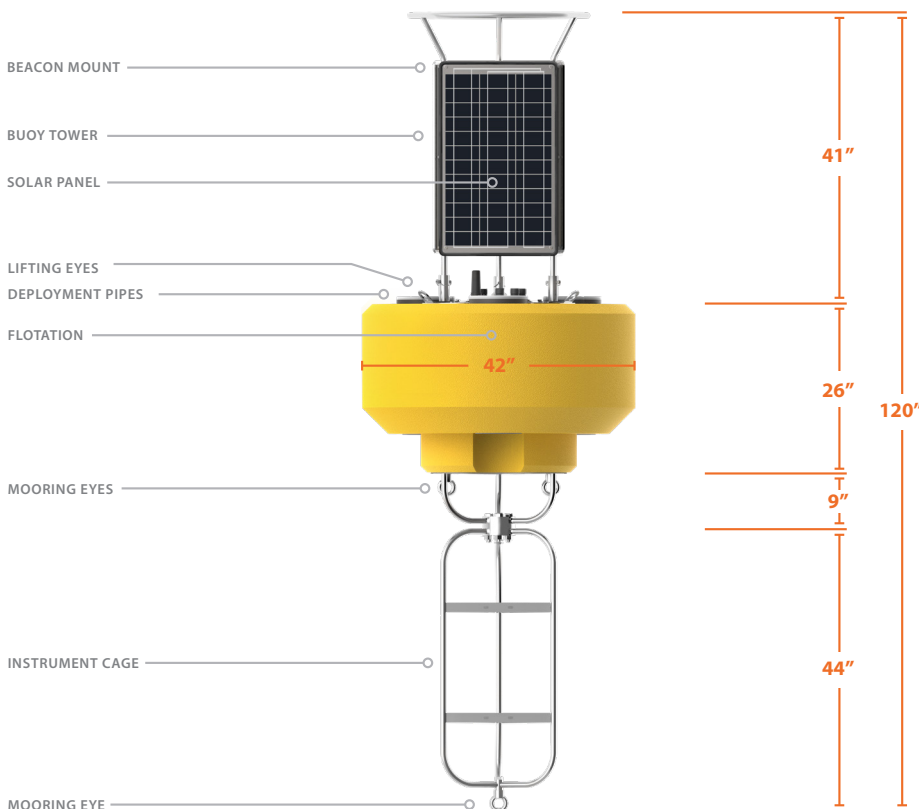
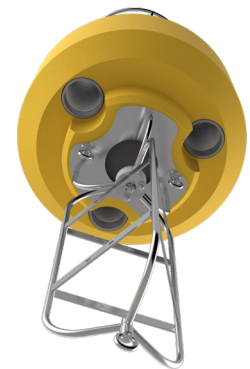
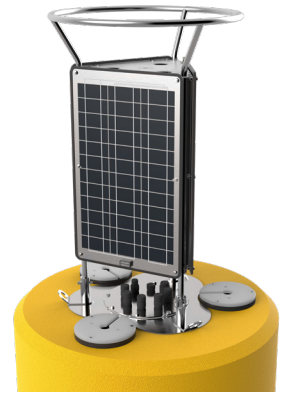
The **CB-950** Data Buoy is optimized for use with NexSens **X2-CBMC** data loggers. Wireless telemetry options include cellular and Iridium satellite. Compatible digital sensor interfaces include RS-232, RS-485 and SDI-12. Each sensor port offers a wet-mateable connector for a reliable waterproof connection. For custom integrations, an optional pass through data well lid includes a set of plugs and cable gland fittings.

CB-950

DATA BUOY

specifications

Hull Outer Diameter	42.0" (106.7cm)
Hull Height	26.0" (66.0cm)
Data Well Inner Diameter	10.3" (26.2cm)
Data Well Height	25.5" (64.8cm)
Pass-Through Hole Diameter	6.0" (15.2cm)
Tower Height	41.0" (104.1cm)
Solar Panels	3x 46-watts
Weight	285 lb (129kg)
Net Buoyancy	950 lb (431kg)
Hull Material	Cross-linked polyethylene foam with polyurea coating & stainless steel deck
Hardware Material	316 stainless steel
Mooring Attachments	3x 3/4" eyenuts



parts list

Part #	Description
CB-950	Data buoy with polymer-coated foam hull & (3) 46-watt solar panels, 950 lb. buoyancy
CB-A05-2	Battery harness with integrated solar regulator & (2) 28 A-Hr batteries
CB-A05-3	Battery harness with integrated solar regulator & (3) 28 A-Hr batteries
CB-PTL	CB-Series buoy pass through data well lid for custom integrations, includes set of plugs & cable gland fittings
X2-CBMC	X2-CBMC buoy-mounted data logger with MCBH connectors
M650H-Y	Solar marine light with 4 nautical mile range, 15 flashes per minute, yellow



tel: **937.426.2703**
8am to 7pm EST, Monday-Friday

fax: **937.426.1125**

NexSens Technology, Inc.
2091 Exchange Court
Fairborn, OH 45324
info@nexsens.com

nexsens.com