



AquiferTest Pro

Pumping & Slug Test Analysis, Interpretation, and Visualization Software



AquiferTest Pro is an easy-to-use software package for analyzing, interpreting, and visualizing pumping and slug test data. AquiferTest Pro offers all the tools needed to accurately interpret data from all types of aquifers in all types of test conditions.



Why Choose AquiferTest Pro?

Benefits:

- Achieve an accurate analysis of aquifer conditions in less time.
- Gain a better understanding of aquifer conditions.
- An all-in-one application means you do not need to invest in additional tools for pumping/slug test data analysis.

Applications:

- Analyze pumping test, slug test, or Lugeon test data to estimate hydraulic conductivity, transmissivity, storativity, specific yield and other hydraulic aquifer/aquitard parameters based on applicable analytic solutions.
- Assess and compare pumping test data using a wide number of solution methods for an improved understanding of the aquifer.
- Predict drawdown at planned well locations.
- Contour pumping and observation drawdown and well interference from one or more pumping wells.
- Prepare professional pumping test and slug test analysis reports.

Advanced Features:

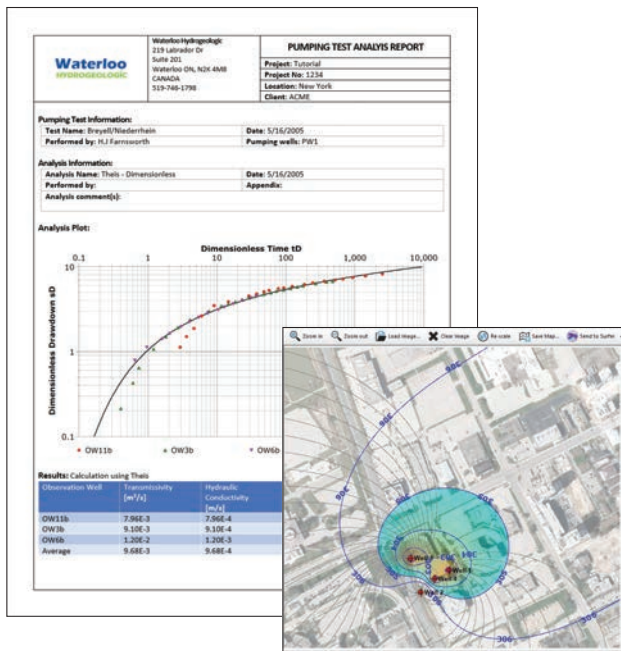
- **Data Import:** Import from Excel, ASCII, text, and data loggers.
- **Data Correction:** Trend correction, data reduction.
- **Automated Curve Matching:** Manual or automated curve matching for both drawdown and derivative data.
- **Derivative Analysis/Diagnostic Plots:** Gain more insights into the test data via on-the-fly comparison of observed data and diagnostic graphs for an easy assessment of the aquifer and well conditions.
- **Mapping & Contouring:** Prepare maps including predicted drawdown, and well interference in a few mouse clicks.
- **Automated Reporting:** All your analyses are automatically summarized in a professional print-ready report.

A Complete Set of Analytical Solutions

- **Confined:** Theis, Cooper Jacob.
- **Unconfined:** Neuman, Boulton.
- **Leaky:** Hantush-Jacob, Hantush with Aquitard Storage.
- **Fractured Flow:** Warren Root, Moench.
- **Wellbore:** Papadopulos-Cooper, Agarwal.
- **Recovery:** Agarwal Recovery, Theis Recovery.
- **Productive Analysis:** Specific Capacity Tests.
- **Step-Drawdown Tests:** Hantush-Bierschenk.
- **Horizontal Wells:** Clonts & Ramey.
- **Slug Tests:** Hvorslev, Bouwer-Rice, Cooper-Bredehoeft-Papadopulos, Butler High-K, Binkhorst-Robbins, Dagan, Ramey-Agarwal-Martin, Mench & Hsieh.

Evaluate Multiple Pumping Test & Aquifer Conditions

- **Aquifer Types:** Confined, unconfined, leaky or fractured.
- **Extent:** Infinite, recharge boundary, or barrier boundary.
- **Isotropy:** Isotropic or anisotropic.
- **Discharge:** Variable or constant rate pumping.
- **Well penetration:** Full or partial aquifer penetration.
- **Data Type:** Drawdown or recovery.
- **Packer Tests:** Lugeon tests.



Software Solutions For Groundwater

At Waterloo Hydrogeologic, we offer a comprehensive suite of applications that meets the needs of any groundwater project: from data management to analysis of hydraulic and geochemical properties, modeling/simulation, visualization and reporting. Our modern hydrogeologic toolset will help you fast-track your groundwater projects with more efficient and robust evaluations and help provide decision makers with clearer and more defensible insights.

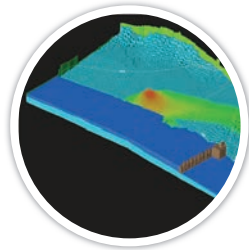
With an over 30-year history of trust by industry professionals, our industry-leading software is used by consultants, regulatory agencies, industry, and educational institutions in over 100 countries.



Visual MODFLOW Flex

3D Groundwater Flow And Transport Modeling And Analysis

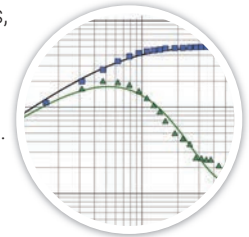
The industry-standard 3D groundwater flow and solute transport modeling interface for developing USGS MODFLOW models. Flex integrates numeric engines, conceptual modeling, advanced 2D/3D visualization, and calibration tools in a single application.



AquiferTest Pro

Pumping & Slug Test Analysis And Interpretation

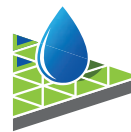
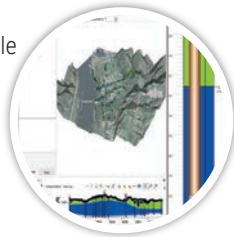
The easy-to-use software package for analysis, interpreting and visualizing pumping and slug test data. AquiferTest Pro offers all the tools needed to accurately interpret data from all types of aquifers in all types of test conditions.



Hydro GeoAnalyst

From Data Discovery to Delivery

The most comprehensive and customizable environmental data management system available on the market. Used around the world, HGA's secure and easy-to-use modular interface integrates customizable database structures with state-of-the-art tools for data management, interpretation, statistical analysis, mapping, charting, 2D/3D visualizations, and automated reporting. It scales from individual practitioners to government agencies and large multi-national industrial clients.



AquaChem

Water quality analysis and geochemical speciation modeling

The go-to application for managing and evaluating geochemical and water quality data. AquaChem features a fully customizable database of physical and chemical parameters with integrated plotting, mapping, scripting, and reporting tools, along with a seamless integrated interface for PHREEQC, the popular USGS model for geochemical speciation.

