

TransPort[®]

PT900 Portable Ultrasonic Flow Meter for Liquids



The TransPort PT900 is the latest generation of portable clamp-on flow meters from Panametrics line of ultrasonic meters. It capitalizes on the ruggedness and superior performance of its predecessor, the TransPort PT878, but delivers a whole new level of intuitive and user-friendly capability based on today's technology.

TransPort PT900 Advantages

- A wide selection of transducers suitable for most applications
- Wireless (Bluetooth[®]) or wired communication from tablet transmitter
- Easy programming with bright touch screen and multiple-language user interface
- Fast-responding, high-accuracy transmitter with green/red light health indication and 8 GB of datalogging storage
- Velocity, volume, mass, totalizer and energy flow rate measurements
- Easy-to-install clamping fixture

TransPort PT900 Applications

- Suitable for most pipe sizes and materials, both lined and unlined
- Suitable for virtually every industry that requires temporary or spot flow rate measurement
- Suitable for many fluids, including potable water, wastewater, cooling and heating water, ultrapure water and other liquids such as water/glycol solutions, crude oil, refined hydrocarbons, chemicals and beverages

TransPort PT900 Makes Your Job So Much Easier

The PT900 has undergone the most involved voice of the user effort to date for Panametrics flow products. Several years of learning about how people use portable flow meters and what they want and need while making flow rate measurements have influenced the PT900's design. Panametrics validated this learning and modified the design approach by sharing initial concepts and early prototypes with users. The result? The best portable flow meter needs to be versatile, easy to install, intuitive to use and capable of making reliable measurements even in the most difficult applications.

What's New About the TransPort PT900?

The PT900 maintains the same high performance as the PT878, but features a total redesign of the flow transmitter, clamping fixture and user interface. Key improvements include a redesigned fixture and a streamlined user interface on an Android tablet.

PT900 is designed to improve the user experience and deliver a measurement that inspires a high level of user confidence. All users, regardless of experience level with the meter, will be able to:

- Install the clamping fixture with minimal confusion or repositioning
- Connect the transmitter and transducer cables correctly
- Turn on the tablet and pair it via Bluetooth® with the transmitter
- Start taking measurements within minutes

Product Details

The TransPort PT900 system includes:

- Clamping fixture with transducers
- Flow transmitter (the electronics)
- Carrying case
- Accessories

Available options include:

- Tablet
- Rechargeable battery pack or spare battery
- Baker Hughes PocketMike thickness gauge
- Energy measurement kit



Clamping Fixture, Transducers and Transmitter Mounted on Pipe

TransPort PT900 Specifications

Operation and Performance

Fluid Types

Liquids: Acoustically conductive fluids, including most clean liquids and many liquids with small amounts of entrained solids or gas bubbles

Flow Measurement

Patented Correlation Transit-Time™ mode

Pipe Sizes

Standard: 0.5 to 24 in. (15 to 600 mm)
Optional: up to 300 in. (7500 mm) available upon request

Pipe Wall Thickness

Up to 3 in. (76.2 mm)

Pipe Material

All metals and most plastics
Consult BHGE for concrete, composite materials and highly corroded or lined pipes.

Accuracy

±1% of reading (2 in./50 mm or greater pipe sizes)
±2% of reading (0.5 in./15 mm to <2 in./50 mm pipe sizes)
Installation assumes a fully developed, symmetrical flow profile (typically 10 pipe diameters upstream and 5 pipe diameters downstream of straight pipe run).
Final installation accuracy is a function of multiple factors including fluid, temperature range, pipe centricity among other factors.

Repeatability

±0.2% of reading

Range (Bidirectional)

0.1 to 40 ft/s (0.03 to 12.19 m/s)

Response Time

Up to 2 Hz

Measurement Parameters

Velocity, Volume, Mass, Energy, Total Flow

Channels

1 or 2 channels

Flow Transmitter

Enclosure

IP65 rating

Specifications

- Weight: 3 lb (1.4 kg)
- Size (h x w x md): 7.9 x 4.3 x 1.38mm
- *Mounting:* Soft strap around clamp

Analog Inputs

4-20 mA (qty 2)

Analog Output

4-20 mA (qty 1)

Digital Output

Pulse (Totalizer), Frequency, Alarm (qty 1)

Digital Communication

- Modbus via RS485 port
- Bluetooth® wireless
- Micro-USB port

Battery

Type: Lithium ion (high-energy, rechargeable)
Life (continuous operation): 18-20 hours
Life (power saver mode): >4 days
Charger: 100 to 240 VAC (50/60/Hz)
Charging Time: Up to 3 hours (from 0% to 100%)

Operating Temperature

Charge: 0 to 45°C (32 to 113°F)
Discharge: -20 to 55°C (-4 to 131°F)

Storage Temperature

-20 to 60°C (-4 to 140°F)

Electronics Classifications

- CE (EMC Directive) IEC 61326-1:2013, IEC 61326-2-3:2013, LVD 2006/95/EC, EN 61010-1 2010
- ANSI/UL STD. 61010-1, CAN/CSA STD. C22.2 NO. 61010-1
- WEEE Compliant (Directive 2012/19/EU)
- RoHS Compliant (Directive 2011/65/EU)



TransPort PT900 Specifications

User Interface

Display

Requires a tablet. Android operating system (version 4.4 or greater) or iOS operating system (iOS version 11.0 or greater, BLE 4.0 or greater, capacity of 16GB and greater).

Dimensions

- 7 in. Tablet:
7.75 x 4.75 x 0.75 in. (196 x 120 x 19 mm) typical
- 8 in. Tablet:

8.75 x 6.00 x 0.75 in. (222 x 152 x 19 mm) typical

Battery Life

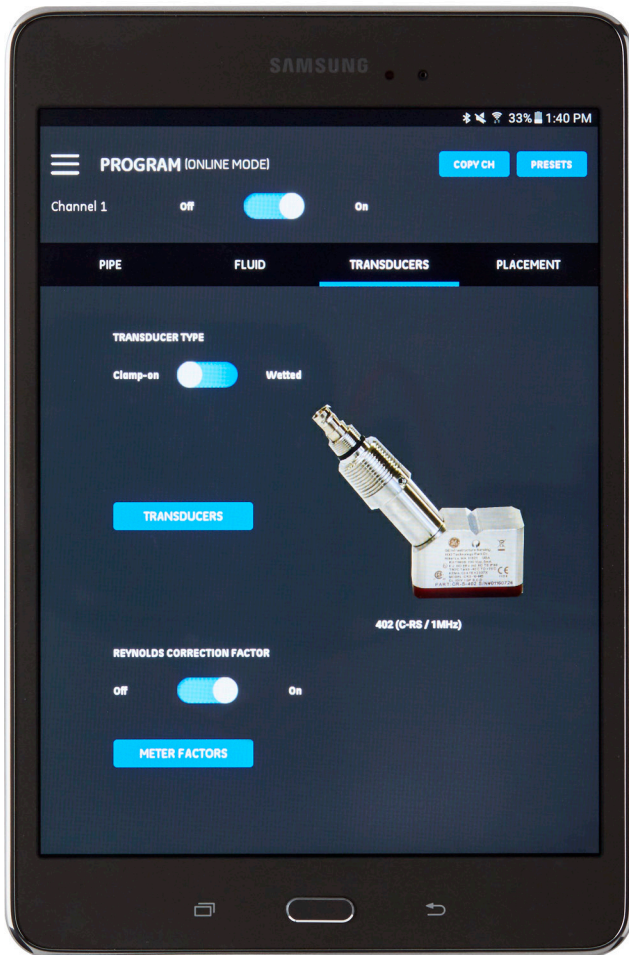
>12 hours of continuous use, function of final settings of tablet

Battery Charger

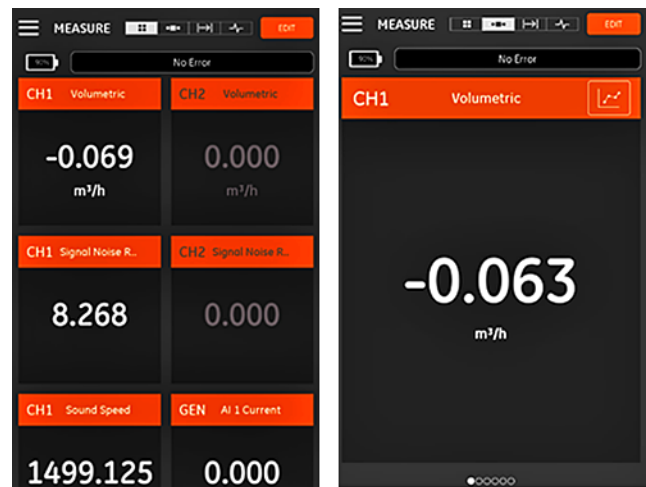
100 to 250 VAC (50/60 Hz)

Communication with Flow Transmitter

Bluetooth® or wired (wired for Android only)



PT900 APP Tablet Display



Measurement Screens

Software Application (PT900 APP)

Intuitive, Swipe Screen Interface

- Colorful, icon-driven design
- Tutorial-style programming
- Site parameter presets
- Multiple display options
- Extensive online help

Languages

English, Arabic, Chinese (Simplified), Dutch, French, German, Italian, Japanese, Korean, Portuguese, Russian, Spanish, Swedish, Turkish

Installing the PT900 APP

Obtain the PT900 APP:

- File provided on SD card (Android)
- Free download from Google Play (Android)
- Free download from App Store (Apple)
- Free download from Baker Hughes Digital Solutions website (Android)

Clamp-On Transducers

Temperature Range*

- *Standard:* -40 to 302°F (-40 to 150°C)
- *Optional:* -328 to 752°F (-200 to 400°C)

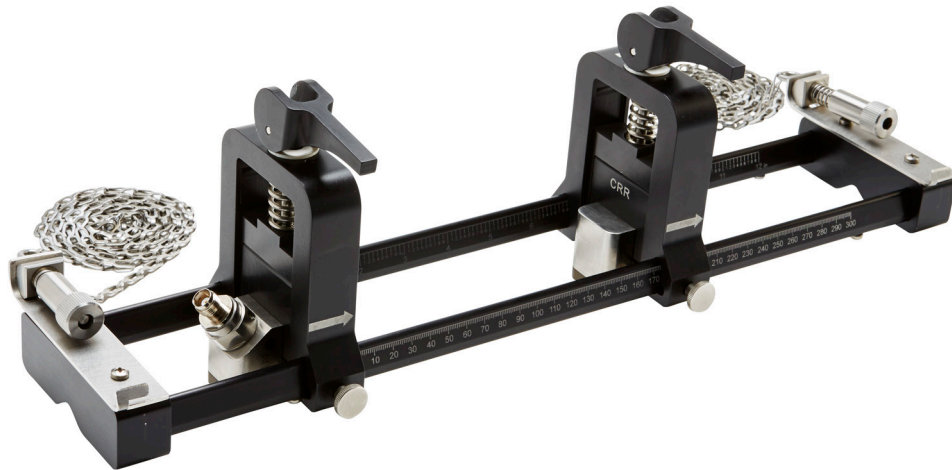
*See individual transducer model specifications for exact temperature range.

Mounting

- New PT clamping fixture for pipes ≥ 2 in. (50 mm)
- CF-LP clamping fixture for 1/2 in. (15 mm) to 2 in. (50 mm) pipes

PT9 Transducer Cables

- Standard Length: 25 ft (8 m) of RG316 coaxial cable
- Maximum Length: 100 ft (30 m) of RG316 coaxial cable
- Temperature Range: -40° to 302°F (-40° to 150°C)



Clamp-On Fixture with CRR Transducers

TransPort PT900 Specifications

Accessories

Cases

- Soft nylon carry bag with strap and dedicated equipment dividers (standard)
- Hard case with wheels and dedicated equipment compartments (optional)

Cables

- *Input and Output Cables:* Analog and Digital
- Cable Adapters: TNC to BNC or UTXDR connectors



Standard Soft Shell Carrying Case



Optional Hard Shell Carrying Case

Options

Tablet

- Android or Apple operating system
- Protective case
- Optional IP68 tablet (Android)



Energy Measurement Kit

The optional Energy Measurement Kit calculates energy flow rate and totalized energy.

- Temperature Transmitter: loop-powered, 4-wire PT1000 surface-mount RTDs, NIST-certified
- Accuracy: $\pm 0.12^{\circ}\text{C}$ ($\pm 0.22^{\circ}\text{F}$) of reading
- Range: 0 to 149°C (32 to 300°F) standard

Baker Hughes Pocket Mike Thickness Gauge

- Compact stainless steel design, IP67
- Pivoting, high-contrast LCD display
- Easy operation via four keys
- Integrated, exchangeable 5 MHz probe
- Range from 1 to 250 mm (0.040 to 10 in.)
- Standard AA batteries



Spare Battery

- Battery Pack: Lithium ion, high-energy, rechargeable
- Battery Charger: 100 to 240 VAC (50/60/Hz)

Cable Adapter

TNC to BNC or UTXDR connectors

How to Order the TransPort PT900 System

PT9-SYS	Base Model Number
	Code Channels
	1C One Channel PT900 (Bluetooth or Direct Wired - Android, Bluetooth - iOS)
	2C Two Channel PT900 (Bluetooth or Direct Wired - Android, Bluetooth - iOS)
	1CW One Channel PT900 (Direct Wired Only - Android)
	2CW Two Channel PT900 (Direct Wired Only - Android)
	Code Power Cord
	1 110/120 VAC (NEMA 5-15P - typical North America)
	2 230 VAC (Schuko CEE 7/7 2 poles and earth - typical European)
	3 230 VAC (BS 1363 A, 3pin square - typical United Kingdom)
	4 230V AC (GB 15934-2008 - typical Asia)
	Code Transducer & Fixture Kit #1
	0 None
	A -40 to 150°C (-40 to 302°F), 50 mm to 600 mm (2" to 24") typical pipe size
	B -40 to 230°C (-40 to 446°F), 15 mm to 50 mm (0.5" to 2") pipe size
	C -40 to 150°C (-40 to 302°F), 150 mm (6") or larger pipe size
	D -40 to 210°C (-40 to 410°F) applications, 50 mm to 600 mm (2" to 24") pipe size
	E Combination of A and C
	F Combination of A, B and C
	G Combination of A and B
	Code Transducer & Fixture Kit #2
	0 None
	A -40 to 150°C (-40 to 302°F), 50 mm to 600 mm (2" to 24") typical pipe size
	B -40 to 230°C (-40 to 446°F), 15 mm to 50 mm (0.5" to 2") pipe size
	C -40 to 150°C (-40 to 302°F), 150 mm (6") or larger pipe size
	D -40 to 210°C (-40 to 410°F) applications, 50 mm to 600 mm (2" to 24") pipe size
	Code Carrying Case
	SC Standard soft shell carrying case; ideal for everyday user
	HC Optional hard shell carrying case; ideal for shipping and transportation
	Code System Options
	TG Pipe wall thickness gauge
	E Energy kit with matched pair PT1000 surface mounted RTDs with transmitter
	C48 Additional chain assembly for mounting on pipe sizes up to 1200 mm (48")
	2C48 Two additional chain assemblies for mounting on pipe sizes up to 1200 mm (48")
	AIO Analog input and output cable
	DIO Digital and discrete input and output cable
	BAT Spare rechargeable battery
	CHG External battery charger for spare battery
	EXT Pair 100 ft extension cables (C-RR transducers)
	EXT2 Two pairs of 100 ft extension cables (C-RR transducers)
	WUSB Cable for wired USB tablet connection
PT9-SYS	- 1C - 2 - A - A - HC - TG

(Example Configuration String)

Options

- PT9-TABLET Android Tablet
- PT9-EXT 100 foot cable (C-RR transducer)
- Other options available upon request



[Panametrics.com](https://panametrics.com)

Copyright 2020. Baker Hughes Company. This material contains one or more registered trademarks of Baker Hughes Company and its subsidiaries in one or more countries. All third-party product and company names are trademarks of their respective holders.

920-674D

